

N.W. 1/4 OF N.E. 1/4 OF
SECTION 17, T.6 N., R.1 W., S.L.B.&M.

TAXING UNIT: 25

IN OGDEN CITY

PREFIX: 12-060

SCALE 1" = 100'

SEE BK. 17, PAGE 36

PARKWOOD ESTATES

NO.

SEE BOOK II
PAGES 155 & 156

SEE PAGE 75

1/4 SEC. LINE

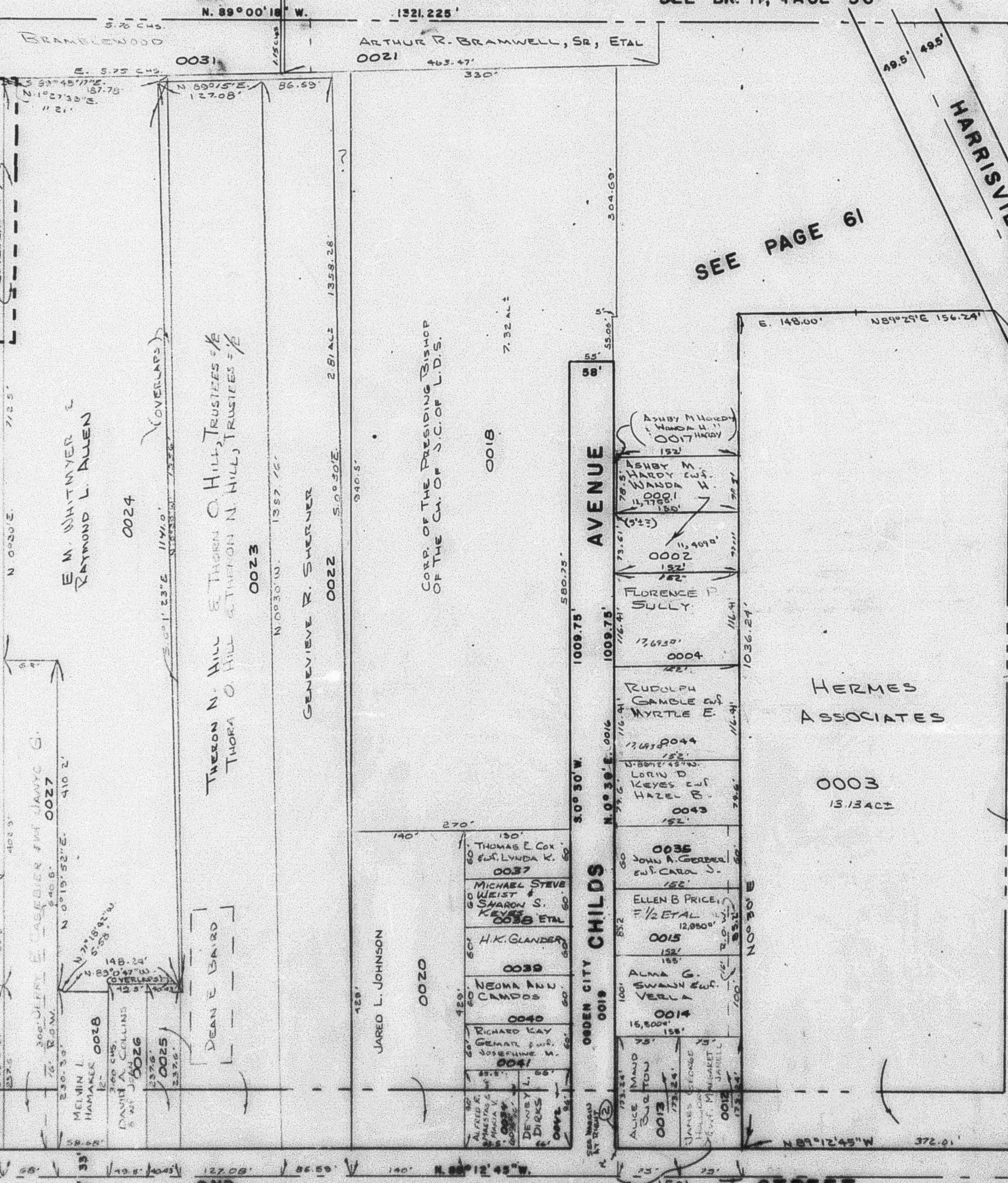
N 0° 52' 45" E.

1323.25'

1/4 SEC. LINE

N 0° 52' 45" E.

1323.25'



SEE PAGE 57

SEE PAGE 61

CORP. OF THE
PRESIDING BISHOP
OF THE CH. OF
S.C. OF L.D.S.

SEE PAGE
59

SEE PAGE 70